

Polaris Hobit D1 PRO

User manual v1.2



Content

1. Introduction.....	1
2. Specs.....	1
3. Operations guide.....	2

1. Introduction

Hobit D1 is a portable UAV detection equipment, easy to operate, light weight, small size, with Direction Finding.

Features	Describe
Detection	Mainstream UAV
Screen	3.5' touch screen
Alarm	Voice+Vibration
Body	All-aluminum CNC body
Direction Finding	Yes

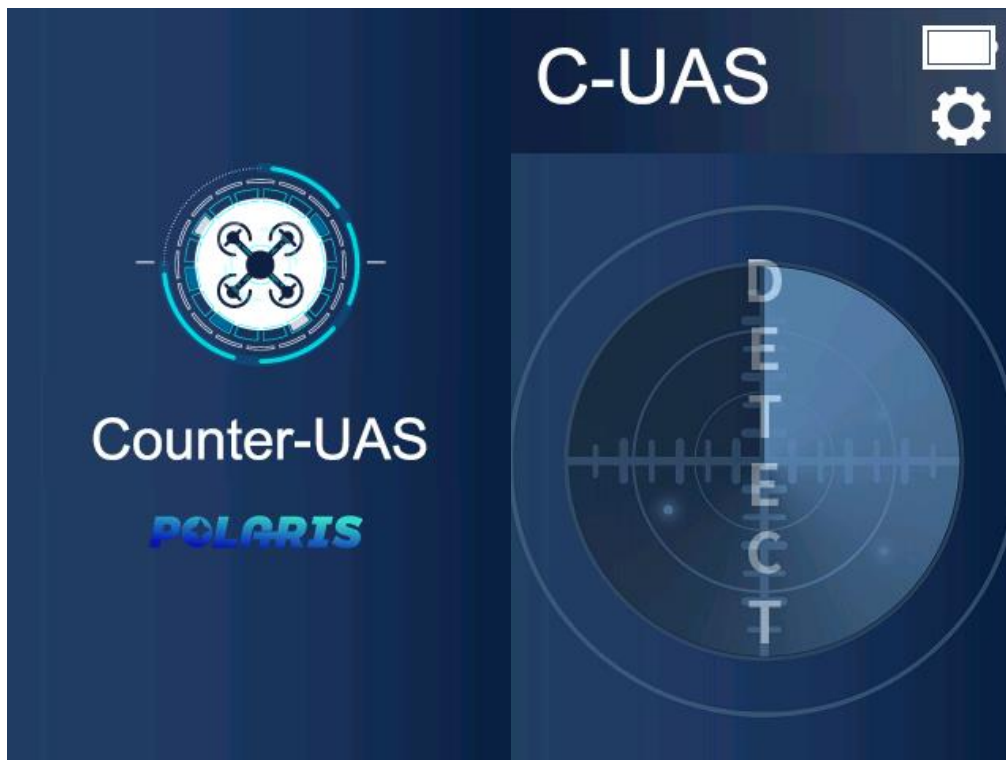
2. Specs

Frequencies	2.4Ghz&5.8Ghz
battery	Up to 8 Hours
Range	1km
Weight	530g
Size	81mm*75mm*265mm
Protection level	IP55

3. Operations guide



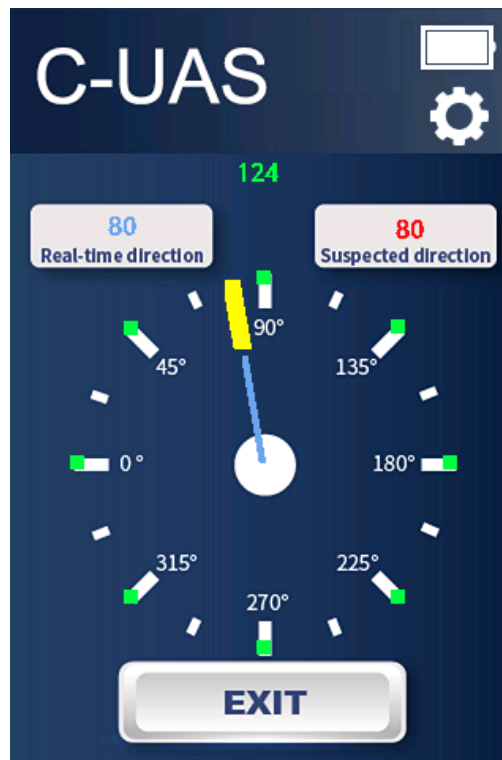
1) Turn on the power button, detection will start automatically.



2) When drone is in effective detect range, press measure the direction



3) In order to measure the signal strength, please turn 360 degrees. Rotate slowly, otherwise measurement will be failed. All red dots will turn green when the process is finished, the D1 Pro 's antenna points in the direction of the drone when the yellow and blue Pointers coincide.



You can also configure the Volume and vibration in settings.



4) Hobit D1 workflow

Here is a example for hobit d1 in workflow.

